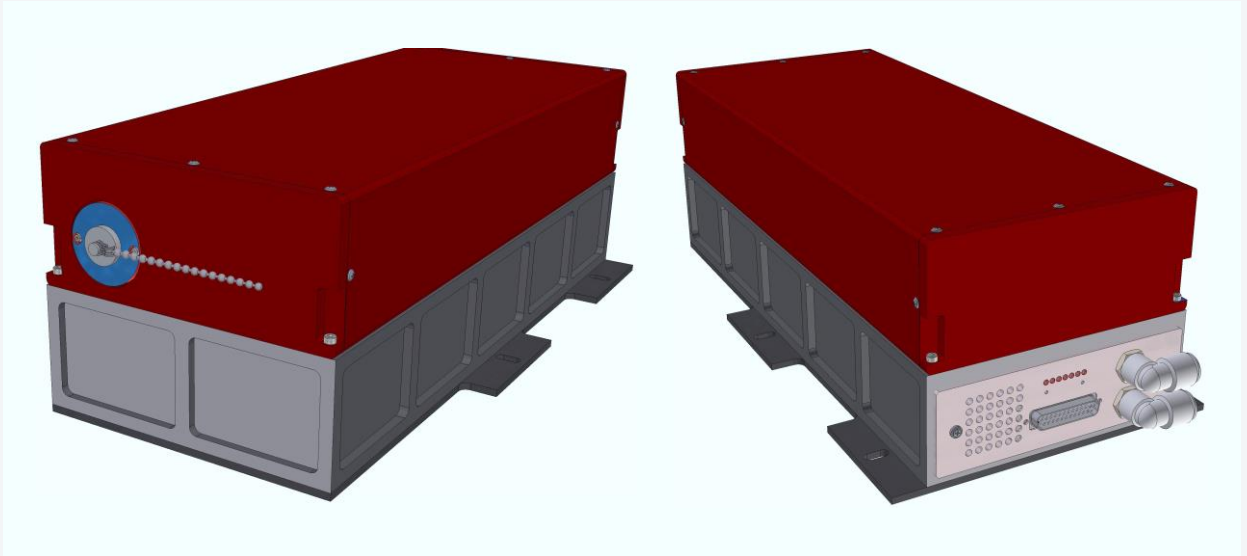


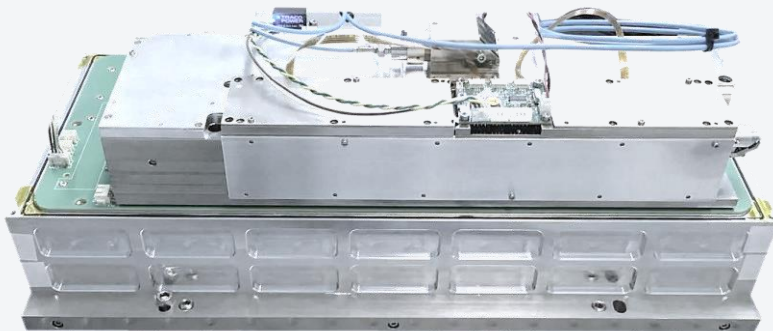
4 Wavelengths Diode Pumped Solid State Laser



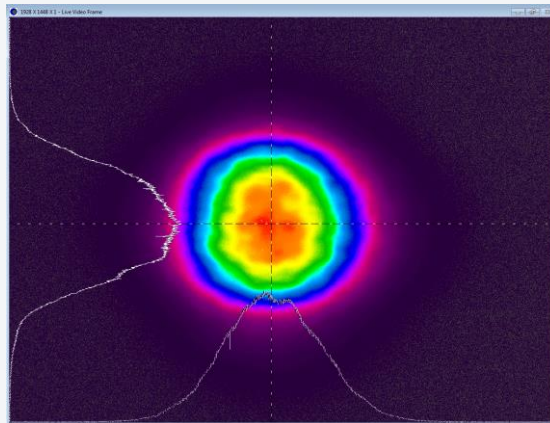
The ARTHOS 20AC is an air-cooled diode pumped solid state laser which can be operated with repetition rates from single shot to 100 Hz. Depending on version the system generates light radiation at 1064nm, 532nm, 355nm, 266 nm in short laser pulses. The laser head consists of an optical and an electrical unit. There are all necessary parts for laser operation and communication included.

Features

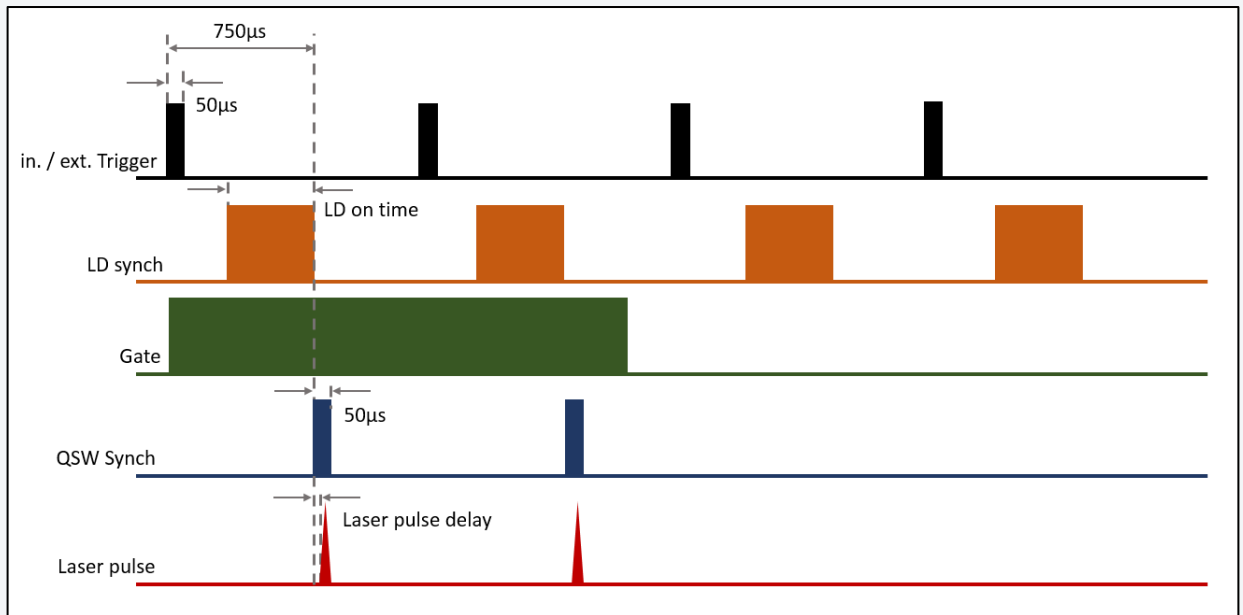
- 1064nm 532nm 355nm 266nm
- 1 - 100Hz
- active Q-switch for short pulses
- Attenuator include



Beam Quality 266nm



Timing Diagram - Operational Modes



The timing diagram shows the relationship of the different timing events of the laser system which are either controlled by the Laser control unit in internal trigger mode or must be applied by the user in external trigger mode.

Specifications				
Wavelength	1064nm	532nm	355nm	266nm
Power / Energy	> 5mJ	> 4mJ	> 3mJ	> 1.0mJ
Repetition Rate	1 - 100Hz			
Pulse Width	11 ± 2ns	7 ± 2ns	7 ± 2ns	7 ± 2ns
Pulse to Pulse Stability (RMS)	< 1.0%	< 1.0%	< 1.5%	< 2.0%
Polarization	vertical	horizontal	vertical	vertical
Beam Diameter	2.4 mm	2.0	1.9	1.8
Beam Divergence	< 8mrad	< 4mrad	< 4 mrad	< 3.5mrad
Operating Conditions				
DC Input Voltage	24 V DC, Typ 10 A, Max 13A			
Warm-up Time	10 min for temperature stabilization			
Temperatur Range (environment)	15 - 35°C			
Relative Humidity	8 - 95 % (not condensing)			
Cooling Requirements	CDA (compressed dry air) or fan cooling			
Cooling Air Temperature Range	10°C - 24°C			
Cooling Air Flow	Min.: 200 L/min			
Power Consumption	Typ.: 250 W; max.: 300 W			
Dimensions				
Laser Head	440mm x 159mm x 220mm			
Weigth				

Mechanical Specifications

