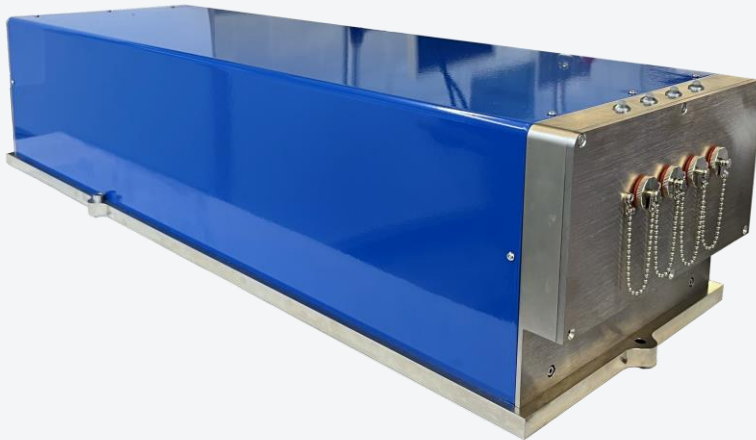


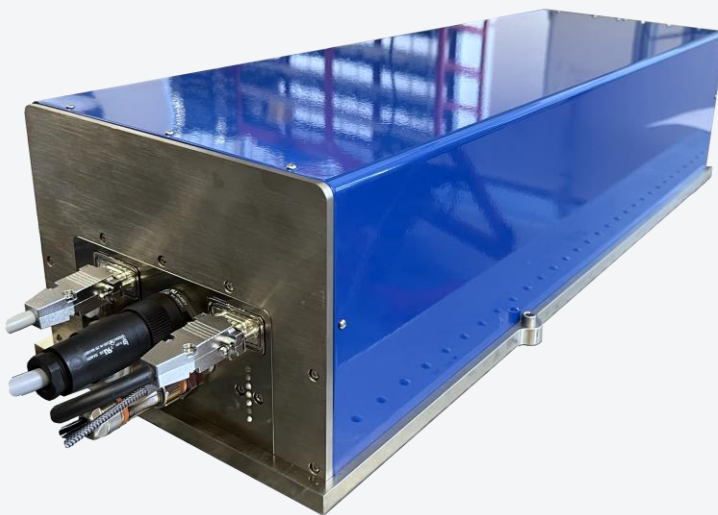
Diode Pumped Solid State Laser



Features

- Nd:Vanadate
- 10 kHz
- active Q-switch
- short pulses
- Attenuator include

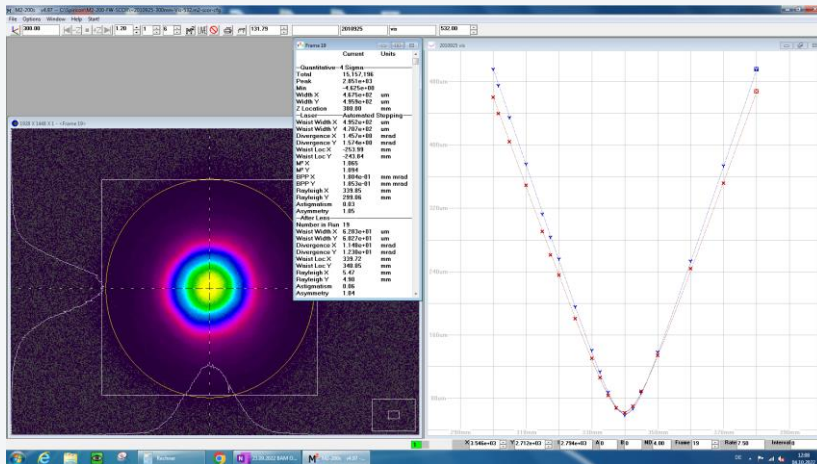
The TARBO is a highly repetitive diode pumped solid state laser which can be operated up to 10 kHz. Depending on version the system generates light radiation at 1064/532/355/266nm in short laser pulses with different average power at the corresponding outputs. The laser head consists of an optical and an electrical unit. There are all necessary parts for laser operation and communication included.



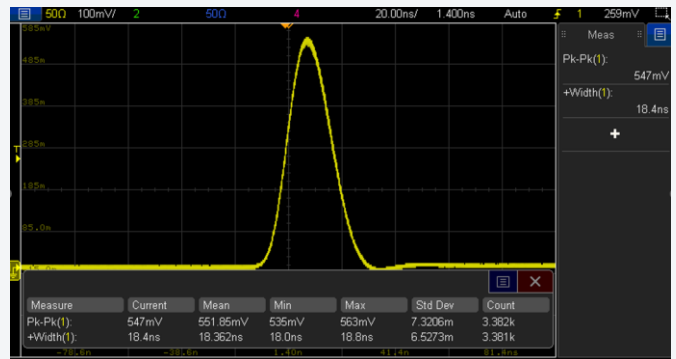
Includes

- Laser head
- Power supply
- Chiller

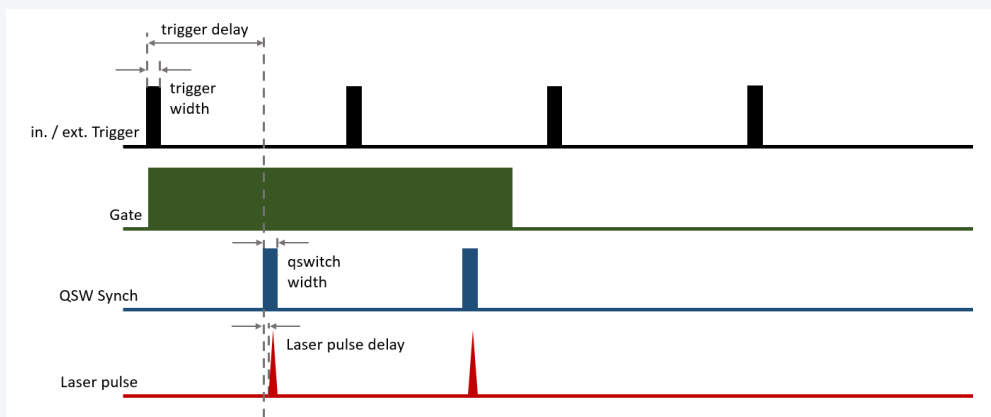
Beam Quality SHG



Pulse Width



Timing Diagram - Operational Modes



The timing diagram shows the relationship of the different timing events of the laser system which are either controlled by the Laser control unit in internal trigger mode or must be applied by the user in external trigger mode.

Specifications				
Name	Tarbo HE MultiColor			
Wavelength	1064	532	355	266nm
Pulse energy @ 10kHz	6 mJ	3.5 mJ	1.5 mJ	0.4 mJ
Pulse width	< 25 ns @ 10kHz			
Repetition rate	10 kHz optimized			
Pulse to pulse stability (RMS)	< 2.0% rms @ 10kHz			
Spatial mode	TEM00			
Beam quality M ²	< 1.3			
Polarization	100:1 linear			
Pointing stability	< 30 µrad			
Beam diameter	3.0 mm (or according to requirements)			
Beam divergence (full angle)	< 0.5 mrad			
Beam asymmetry	< 1.1 (> 90%)			
Jitter	< 5 ns			
Operating Conditions				
AC Input voltage (Power supply)	240 VAC, 50-60 Hz, 16A			
Warm-up time	15 min from standby; 30 min from cold start			
Temperatur range (environment)	15 - 35°C (non condensing)			
Relative humidity	10 up to 75 % (non condensing)			
Water cooling	25°C ± 0.3°C; 2.0 l/min			
Power consumption	< 2.5 kW			
Dimensions				
Laser head (L x W x H)	710mm(L) x 170mm(H) x 260mm(W)			
Weigth	<30kg			
Power supply	600mm(L) x 589mm(H) x 553mm(W)			
Weigth	Depending of cooling type			

Mechanical Specifications

